

# Novus Spectra

Premier dual-port photocoagulator  
for OR and Clinic



# Passion for ophthalmic lasers that dates back more than 40 years!

At Lumenis, we truly understand photocoagulation technology; that is after all only one of the privileges reserved for the company that pioneered the first argon laser photocoagulator for ophthalmology. It is also precisely the reason why many of ophthalmologists around the globe have actively chosen to purchase Lumenis photocoagulators for the past 40 years – making Lumenis one of the global market leaders.

## Novus Spectra

Premier, high-powered, photocoagulator

The Lumenis Novus Spectra is an innovative photocoagulator with an extensive set of features that deliver power and reliability with proprietary advancements in diode-pumped solid-state technology.

Next-generation DPSS technology drives 2.5 W of power from the compact Novus Spectra system and an active resonator temperature control ensures stable beam output and system reliability.

Versatile, efficient and compatible with a wide-array of delivery devices, the dual-port Novus Spectra was designed to provide optimal results in the operating room and outpatient clinic.



# SureSpot™ Optics

Sharply defined and evenly distributed power on the retina; Safe & low-power density at the cornea and the lens

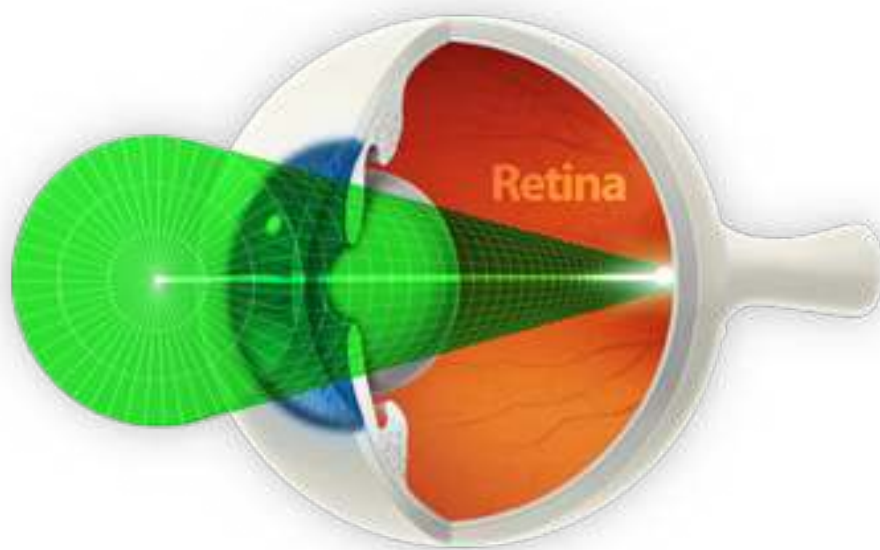
As with all Lumenis photocoagulators, the Novus Spectra incorporates SureSpot Optics technology in all slit lamp adapters.

The unique and patented SureSpot optics technology from Lumenis ensures that the focal point of the laser beam is maintained on the retina while power density on the cornea and lens is minimized for increased safety.

SureSpot optics also creates a true 50-micron laser spot; that capability distinguishes the Lumenis technology from other lasers that may have a 100-micron minimum spot size and/or project a fuzzy laser spot on the retina.

In essence, SureSpot optics improves treatment efficacy and precision while reducing the potential for damage to anterior-segment tissues. The latter occurrence is especially a concern when using wide-angle lenses that enhance light uptake by the cornea and lens.

	Defocus Optics	Lumenis Patented SureSpot™ Optics	Parfocal Optics
Titration	✓	✓	✗
Low Power density on the cornea	✓	✓	✗
Sharp spot on retina	✗	✓	✓

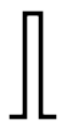


✓ Safe and Low Power Density on the Cornea and Lens

✓ Sharp Spot Beam Waist on the Retina



Cornea



Retina

# Novus Spectra for the OR

- Ergonomic & Compact OR Cart: with built-in storage for accessories
- Remote control: conveniently adjust laser parameters
- Dual Fiber Port: switch instantly between endo-probe and LIO
- PowerEase™ Footswitch: hands-free power adjustment

**LIO:** Choose a multicolor Laser Indirect Ophthalmoscope that suits your preferences. Both our Heine™ and Keeler™ models are rugged, lightweight and equipped with the most advanced laser delivery technology in the market.

**Endo Probes:** A comprehensive and wide selection of ophthalmic endo probes to meet every clinical need and indication. These include standard, straight, curved, aspirating, illuminating and stepped in 20, 23 and 25 gauge sizes, among others.

**Endo Kit:** Surgical microscope eye safety filter with the Lumenis patented ClearView™ technology. The photopic balanced coating eliminates color distortion of the treatment site while optimizing white light transmission or “brightness” of the physician’s view.

**PowerEase™ Footswitch:** The Lumenis \*PowerEase™ footswitch provides hands-free power adjustment of the laser by toggling left or right within the footswitch housing.



Eye Safety Filters available for:  
Zeiss\*, Wild\*, Moller-Wedel\*,  
Leica\*, and Topcon\* microscopes

# Novus Spectra for the Clinic

- Compatible with your preferred Slit Lamp
- Compact, lightweight and space-saving
- Patented SureSpot Optics
- Designed for the busy practice with high patient throughput

**PowerEase™ Footswitch:** The Lumenis \*PowerEase™ footswitch provides hands-free power adjustment of the laser by toggling left or right within the footswitch housing.

**LIO:** Choose a multicolor Laser Indirect Ophthalmoscope that suits your preferences. Both our Heine™ and Keeler™ models are rugged, lightweight and equipped with the most advanced laser delivery technology in the market.

**LaserLinks:** The Lumenis family of LaserLink Slit Lamp adapters will transform most commercially available slit lamps into advanced laser delivery devices with superior optics capabilities.

**Eye Safety Filters:** a selection of automatic and fixed eye safety filters for the Slit Lamp with the Lumenis patented ClearView™ technology. The photopic balanced coating eliminates color distortion of the treatment site while optimizing white light transmission or “brightness” of the physician’s view.



# The Novus Spectra Advantage

## Superior Optics

### Homogeneous laser spot at target tissue

Our advanced optics and laser delivery technology features uniform energy distribution across the entire laser spot area for more precise and safer treatment. The result is a homogenous laser spot with evenly distributed power across the full diameter of the spot, eliminating the potential risk for the formation of “hot spots”.

## Dual Fiber Port

### Instantly switch between delivery devices

Dependability is of crucial importance in both the OR and Office settings. Changing delivery devices is fast and easy. The Novus Spectra automatically senses the delivery devices connected to it. Laser parameters are adjusted internally to compensate for the chosen delivery device to maintain selected power density on the target tissue.

## ClearView™ Filters

### Optimized view of treatment site

The Lumenis ClearView™ filters’ photopic balanced coating eliminates color distortion of the treatment site while optimizing white light transmission or “brightness” of the physician’s view. A proprietary coating protects the filter from environmental changes and scratches.

## User-Friendly

### Control Panel & Remote Keypad

A control panel and illuminated remote keypad\* put all operations literally at your fingertips. Adjusting parameters is always within easy and comfortable reach. Conveniently position the remote control on either side of the slit lamp, or in a sterile cover for the operating room.

The Lumenis \*PowerEase™ footswitch provides hands-free power adjustment of the laser by toggling left or right within the footswitch housing.

The Lumenis \*Smart™ footswitch contains an integrated proximity sensor which inserts and removes the physician eye safety filter at the moment you slide your foot in and out of the footswitch housing.

\* Optional accessory



Novus Spectra is intended solely for use by trained physicians. It is contraindicated for eyes with severe media opacities. Risks include increased macular edema and bleeding in areas of neovascularization. Refer to the operator manual for a complete list of intended use, contraindications and risks.

# Lumenis Selecta™ Platform

Retinal, Cataract and Glaucoma Therapy in ONE

## Maximum flexibility; minimum footprint

Connect the Novus Spectra to the Lumenis Selecta Duet™ (YAG & SLT) and create the Trio™ - combining YAG, SLT and Photocoagulation technologies. Gain access to infinite possibilities with minimal space requirements.

The innovation does not stop with the most advanced laser and optics.

The new Selecta table offers true wheelchair accessibility, optimal space utilization and overall stability by relying on two side columns instead of the traditional one. This highly ergonomic table design excels at maximizing user and patient space, while conveniently maintaining a compact footprint in your office.



## Lumenis Vision - Your Preferred Partner

Lumenis Ophthalmology is one of the world leading companies in non-refractive ophthalmic lasers. It offers a wide range of products with an unparalleled product support system. Lumenis has comprehensive global installed-base and is highly oriented to keep investing in research and development.

Since introducing the first laser photocoagulator to ophthalmology in 1970, Lumenis has focused on providing ophthalmologists with innovative laser therapies to preserve and improve the sight of patients worldwide.

Lumenis Ophthalmology is renowned for technological breakthroughs and a long list of industry gold standards. Our company pioneered the first argon laser photocoagulator for ophthalmology; the first approved marketer of Nd:YAG photodisruptor lasers; developed and introduced the breakthrough technology of multicolor photocoagulation along with the world's first Laser Indirect Ophthalmoscope (LIO); developed and brought to market the revolutionary SLT technology for managing POAG; and more.

Today, Lumenis Ophthalmology offers you the confidence of doing business with a company that is truly committed to ophthalmology and to meeting your needs.

## Novus Spectra Specifications

<b>Laser System</b>	Diode-pumped solid-state
<b>Wavelength</b>	532 nm
<b>Pulse Duration</b>	Pulse Duration .01–3.0 seconds
<b>Pulse Rate</b>	.05–1.0 seconds and single pulse
<b>Energy Settings</b>	50 mW to 2500 mW out of an endo-ocular probe
<b>Spot Size</b>	50–1000 microns with LaserLink Z-1000, 50–500 microns with Converging-Optics LaserLink
<b>Aiming Beam</b>	Contrasting color, adjustable intensity 635 nm nominal, <1.0 mW
<b>Cooling System</b>	Air-cooled
<b>Power Requirements</b>	110 VAC, <6A, 50/60 Hz, Single phase, 220 VAC, <3A, 50/60 Hz, Single phase
<b>Dimensions (Console)</b>	Single Port 15.2cm (6in.) x 25.4cm (10in.) x 35.6cm (14in.) Dual Port 15.2cm (6in.) x 25.4cm (10in.) x 37.5cm (14.5in.)
<b>Weight</b>	8 kg or 17.5 lbs
<b>Delivery Systems</b>	LaserLink Z-1000 Slit Lamp Adaptor (for Zeiss® SL 130, 30SL, 20SL and 125SL); Converging Optics Laser Link, Keeler® & Heine® LIO Comprehensive selection of standard, straight, curved, aspirating, illuminating and stepped endophotocoagulation probes in 20, 23 and 25 gauge sizes, among others
<b>Available Accessories</b>	Standard, Smart and PowerEase foot switches; Physician eye safety filters; Remote control; Comprehensive selection of standard, straight, curved, aspirating, illuminating and stepped endophotocoagulation probes in 20, 23 and 25 gauge sizes, among others
<b>Physical characteristics</b>	Height 15.2 cm (6 in), Width 25.4 cm (10 in), Depth (Single port system) 35.6 cm (14 in), Depth (Dual port system) 37.5 cm (14.5 in), Weight 8 kg (17 lb)

### Lumenis® Certified Service | Certified Engineers & Parts > Reliable Performance > Superior Value > Satisfied Customers

USA Toll-free 1-877-LUMENIS (1-877-586-3647)

For outside the USA, visit [www.lumenis.com](http://www.lumenis.com), click 'Service & Support', contact your local Lumenis representative

### Lumenis Global Sales Offices

#### Lumenis Inc.

San Jose, CA, USA  
Tel +1 408 764 3000  
Fax +1 408 764 3999

#### Lumenis Japan Co. Ltd.

Tokyo, Japan  
Tel +81 3 6743 8300  
Fax +81 3 6743 8301

#### Lumenis (CHINA) Inc.

Beijing, China  
Tel +86 10 5737 6677  
Fax +86 10 5737 6767

#### Lumenis (HK) Ltd.

Hong Kong  
Tel +852 2174 2800  
Fax +852 2722 5151

#### Lumenis India

Haryana, India  
Tel +91 124 4210795

#### Lumenis (UK) Ltd.

Elstree Hertfordshire, UK  
Tel +44 20 8736 4110  
Fax +44 20 8736 4119

#### Lumenis (GERMANY) GmbH

Dreieich-Dreieichenhain,  
Germany  
Tel +49 6103 8335 0  
Fax +49 6103 8335 300

#### Lumenis (ITALY) Srl.

Rome, Italy  
Tel +39 06 90 75 230  
Fax +39 06 90 75 269



ISO 13485 CERTIFIED

For an authorized Lumenis representative in your country, please visit: [www.lumenis.com](http://www.lumenis.com)

Or email us at: [information@lumenis.com](mailto:information@lumenis.com)