

OptiLight

A Bright Solution
for Dry Eyes





Elevating Dry Eye Management

Lumenis puts the power to manage dry eye disease in the palm of your hand

Do your patients suffer from dry, gritty, or burning eyes? Dry eye disease affects 5-50% of the population,¹ impacting vision and quality of life as well as the outcomes of ophthalmic surgeries.

Introducing the first and only IPL, FDA-approved for management of dry eye disease due to meibomian gland dysfunction (MGD), the leading cause of dry eye disease.²

With clinically proven, patented technologies, the power for treating dry eye disease is in the palm of your hand. Get the safe, precise, elegant procedure you want and the comfortable, effective therapy patients need to manage dry eye disease with OptiLight.

OptiLight by Lumenis, the Inventors of IPL

At Lumenis, we know that to maintain our legacy in eye care, we must constantly look ahead and seek new ways to create value. As the inventors of IPL, we lead the market in light-based technologies, and continually meet new challenges through innovation. Lumenis is proud to elevate dry eye treatment with OptiLight, featuring patented Optimal Pulse Technology, for targeted, precise, controlled treatment.

Every Element Designed for a Precise, Comfortable Dry Eye Procedure



Patented OPT® Handpiece

Treat the delicate facial contours of each individual patient. The patented OPT® handpiece is easily customized to fit every curve and outline.



Ergonomic IPL Handpiece

Treat wider areas safely and comfortably using the IPL handpiece with patented SapphireCool™ technology to effectively break dry eye's vicious cycle of inflammation.



Personalized Experience for Maximum Safety and Comfort

Experience optimal energy control at the tip of your OptiLight, for targeted, precise, hygienic and controlled treatment, especially for delicate areas.



Proven Settings and Protocols

Utilize embedded settings based on Lumenis' clinically validated treatment protocols for safe and effective treatment.



Transforming the use of light with OPT® technology

With the Patented Optimal Pulse Technology (OPT®) you can deliver targeted, precise and controlled treatment. The energy you set is the energy you get—optimal energy with a no-spike consistency.



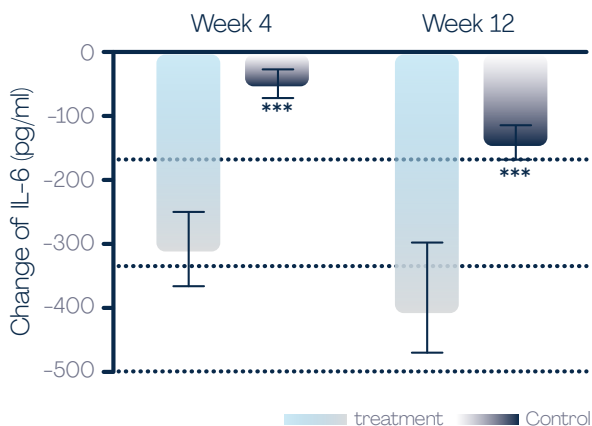
Break the Dry Eye Vicious Cycle of Inflammation

With every pulse of light, this first-of-its-kind light-based treatment works to control the inflammatory process and to improve signs of dry eye disease due to MGD. Peer-reviewed clinical studies show that Lumenis IPL with OPT addresses the dry eye vicious cycle of inflammation*:

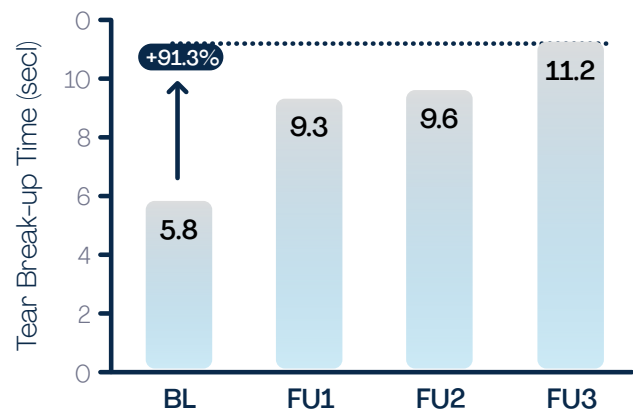
- ✓ Decreases the level of pro-inflammatory mediators to inhibit inflammation^{3,4}
- ✓ Alleviates the abnormal blood vessels that perpetuate inflammation^{5,6}
- ✓ Decreases the population of Demodex mites, which stimulate infection and boost bacterial load on the eyelids⁷
- ✓ Restores meibomian gland morphology and functionality^{4,8}
- ✓ Increases tear breakup time⁹

Clinically Proven Effective and Safe*

Decrease Inflammatory Markers⁴



Improve Tear Breakup Time⁹



* All clinical studies referred here were conducted with Lumenis IPL with OPT.



Elevate Patient Care

OptiLight is easy to use, with minimal training and set-up. Each treatment takes about 15 minutes, so you can easily integrate OptiLight into the workflow. Patients achieve results in just four comfortable OptiLight treatments, with little to no side effects.



Elevate Your Practice

With OptiLight in your practice, your patients can count on you for a medical solution to a frustrating condition. OptiLight also helps expand your practice with a new line of treatment and upgrade to aesthetics treatments. Lumenis is here to help, with clinical training and marketing support to enhance your growth.

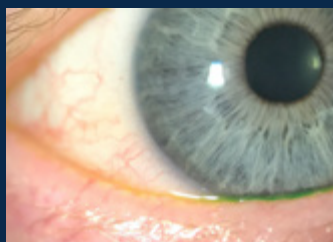
Before and After: Visibly Improved Signs of Dry Eye*



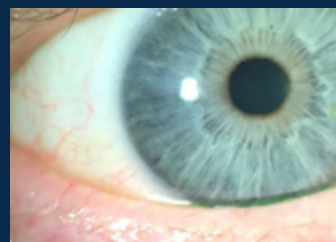
Before



After 2 treatments



Before



After 2 treatments

Courtesy of Laura M. Periman, MD

* Treatments conducted with Lumenis IPL with OPT

Technical Parameters

System Specifications

Dimensions [without ResurFX]	51 X 56 X 52 cm (21 X 22 X 20.5 inches)
Dimensions [with ResurFX]	51 X 56 X 65 cm (21 X 22 X 25.6 inches)
Weight [without ResurFX]	45 kg / 99.2 lbs
Weight [with ResurFX]	60 kg / 132.3 lbs
Electrical requirements	100 - 240 VAC $\pm 10\%$, 12A max, 50/60 Hz, single phase, dedicated line

OptiLight

Spectrum	400-1200 nm
ExpertFilters*	Rosacea I-III; Rosacea IV-V; OPT; Acne: (400-600 & 800-1200); Vascular (530-650 & 900-1200); 515 nm, 560 nm; 590 nm; 615 nm; 640 nm; 695 nm; 755 nm;
Lightguides	15 x 35 mm; 8 x 15 mm
Maximal Fluence**	35 J/cm ²
Pulse Duration**	4-20 ms
Pulse Delay**	5-150 ms
Pulse Characteristic	Multiple Sequential Pulsing
Repetition Rate	Up to 1 Hz
Spot Size	35x15 mm; 15x8 mm, 6.4mm \varnothing
Cooling	Continuous contact for IPL handpiece

Risks and warning (non-inclusive list):

Indication for Use: Improvement of signs of Dry Eye Disease (DED) due to Meibomian Gland Dysfunction (MGD), also known as evaporative dry eye or lipid deficiency dry eye, in patients 22 years of age and older with moderate to severe signs and symptoms of DED due to MGD and with Fitzpatrick skin types I-IV. IPL is to be applied only to skin on the malar region of the face, from tragus to tragus including the nose (eyes should be fully covered by protective eyewear). IPL is intended to be applied as an adjunct to other modalities, such as meibomian gland expression, artificial tear lubricants and warm compresses.

Treatment with OptiLight is contraindicated for patients with the following conditions in the treatment area: Ocular surgery or eyelid surgery or Neuro-paralysis within 6 months prior to the first treatment; Uncontrolled eye disorders affecting the ocular surface; Pre-cancerous lesions, skin cancer or pigmented lesions; Uncontrolled infections or uncontrolled immunosuppressive diseases; Recent Ocular infections; History of cold sores or rashes in the perioral area, including: Herpes simplex 1 & 2, Systemic Lupus erythematosus and porphyria; Use of photosensitive medication and/or herbs that may cause sensitivity within 3 months prior to the first IPL session; Recent radiation therapy to the head or neck or planned radiation therapy; Recent treatment with chemotherapeutic agent or planned chemotherapy; History of migraines, seizures or epilepsy. Patients eyes must be completely occluded during the treatment. Please refer to the operator manual for a complete list of intended use, contraindications and risks.

The following possible side effects can occur following IPL treatments: Pain/discomfort, damage to natural skin texture, change of pigmentation, scarring, excessive edema, fragile skin, bruising, burns, pruritus and xerosis. Please refer to the user manual or ask your doctor for a complete list of intended use, contraindications and risks.

All studies cited here were performed with Lumenis IPL with OPT: 1. Stapleton F et al. (2017), *Ocul Surf* 15(3):334-365. 2. Lemp MA et al. (2012), *Cornea* 2012;31(5):472-428. 3. Liu et al. (2017), *Am J Ophthalmol* 181:190. 4. Yin et al. (2018), *Curr Eye Res* 43(3):308-313. 5. Kassir et al. (2011) *J Cosmet Laser Ther* 13(5):216-222. 6. Papageorgiou et al. (2008) *Br J Dermatol* 159(3):628-632. 7. Prieto et al. (2002), *Lasers Surg Med* 30(2):82-85. 8. Rong et al (2018), *Photomed Laser Surg* 2018 Jun;36(6):326-332. 9. Dell et al. (2017) *Clin Ophthalmol* 11:817-827.

* Rosacea I-III, Rosacea IV-V, and OPT filters are received complementary with the system. Other filters can be purchased separately

** For upgraded IPL aesthetic configuration

 Lumenis Ltd.
Yokneam Industrial Park
Hakidma Street 6, P.O.B. # 240
Yokneam 2069204, ISRAEL
Tel +972 4 959 9000

 Lumenis (Germany) GmbH
Heinrich-Hertz-Str 3 D-63303
Dreieich-Dreieichenhain
GERMANY
Tel +49 (0) 6103 8335 0

AMERICAS
San Jose, CA, USA
Tel +1 408 764 3000
+1 877 586 3647
Fax +1 408 764 3999

JAPAN
Tokyo, Japan
Tel +81 3 4431 8300
Fax +81 3 4431 8301

ASIA / PACIFIC
Beijing, China
Tel +86 10 5737 6677
Gurgaon, India
Tel +91 124 422 07 95
Kowloon, Hong Kong
Tel +852 217 428 00
Fax +852 272 251 51

EMEA
Dreieich Dreieichenhain,
Germany
Tel +49 6103 8335 0
Fax +49 6103 8335 300
Roma (RM), Italy
Tel +39 06 90 75 230
Fax +39 06 90 75 269
Hertfordshire, UK
Tel +44 20 8736 4110
Fax +44 20 8736 4119

 Lumenis®
Energy to Healthcare

www.lumenis.com/OptiLight

© 2021 Lumenis Ltd. All Rights Reserved. PB-00029930 Rev A

