

STELLAR^{M22} ✨

THE MULTI-APPLICATION
PLATFORM
YOUR PRACTICE
MUST HAVE

GROW YOUR PRACTICE.
MAXIMIZE YOUR REVENUE.



LUMENIS

WWW.LUMENIS.COM

IMAGINE WHAT A SINGLE, MULTI-APPLICATION PLATFORM
OFFERING 30 BESTSELLING, SKIN TREATMENTS AND HAIR REMOVAL COULD DO FOR
YOUR PATIENTS AND YOUR PRACTICE...

INTRODUCING:

STELLAR^{M22}  TM
BY LUMENIS



THE PLATFORM THAT EXPANDS YOUR AESTHETIC OFFERINGS

With over 150 clinical studies, and Lumenis' 50+ years of innovation, this multi-application system offers over 30 cutting-edge skin and hair removal solutions for any gender, age and skin type.

**Create Your Own Success Story
and Elevate Your Practice with
CLINICALLY PROVEN RESULTS.**

REVENUE FROM DAY ONE

Real-world user data reveals it generates new revenue right from the start!

EXPAND YOUR BUSINESS

- ✦ Offer more treatments to more patients
- ✦ Become a one-stop solution for all your patients' aesthetic needs

GLOBAL TRUST

- ✦ Recognized by practitioners worldwide for safety & efficacy
- ✦ Leading the market with +30K systems sold in +100 countries

SCIENCE-BASED TREATMENT PRESETS

- ✦ **BASIC Mode** with 40 preset protocols
- ✦ **NORMAL Mode** with over 600 presets
- ✦ **ADVANCED Mode** for fully customized treatments

GROW YOUR PRACTICE OFFERING

4 TECHNOLOGIES IN 1 DEVICE

STELLAR™ IPL



ONE VERSATILE APPLICATOR FOR 23 SKIN TREATMENTS AND HAIR REMOVAL

- 6th Generation IPL Device, invented by Lumenis in 1993.
- Optimal Pulse Technology (OPT®), controls pulse shape and duration.
- Multiple Sequential Pulsing (MSP™), enhances patient safety and comfort with cooling intervals between pulses
- 9 ExpertFilters™, easily interchangeable within seconds for versatile treatment options.
- 3 SapphireCool™ lightguides, ensure patient comfort with continuous contact cooling.

ResurFX™



NEEDS JUST ONE PASS FOR EFFECTIVE SKIN RESURFACING, SAVING TIME AND PROTECTING PATIENTS' SKIN

- The only true fractional non-ablative technology.
- State-of-the-art CoolScan™ scanner with continuous contact cooling for increased patient comfort.
- Choose from over 600 combinations of area shape, size and density for optimal treatment, whether a single lesion or the whole face.
- Easy visibility of the treatment area through the SapphireCool™ Tip window.

Q-Switched Nd:YAG



SKIN TONING BY TREATING PIGMENTED LESIONS AND REMOVING DARK TATTOOS

- Homogenous 'Top Hat' beam profile for enhanced treatment safety and efficacy.
- **Safe & Effective Treatments for All Skin Types** - Indicated for use in applications requiring selective photomechanical/photoacoustic effects.
- Single head for all Q-Switched applications.
- 7 spot sizes for customized treatments.

Multi-Spot™ Nd:YAG



FOR PRECISE TREATMENT OF VASCULAR LESIONS AND LEG VEINS ON ALL SKIN TYPES

- Multiple Sequential Pulsing (MSP™) allows cooling between pulses, reducing risk of skin damage when treating Vascular Lesions. The series of sub-pulses enables deeper penetration and an overall longer pulse duration, which is crucial during treatment.
- 3 SapphireCool™ lightguides, changeable in seconds, for patient comfort through continuous contact cooling.

MORE TREATMENTS TO MORE PATIENTS



**STELLAR™
IPL**



ResurFX™



**Q-Switched
Nd:YAG**



**Multi-Spot™
Nd:YAG**



**Sun Damage
(Pigmentation,
Sunsports)**



**PhotoFractional
(With IPL)**



**Dark Tattoo
Removal**



Leg Veins



**Age
Spots**



**Skin
Rejuvenation**



**Pigmented Lesions
(Skin Types I-VI)**



**Deep Vascular
Lesions**



Hair Removal



Acne Scars



Skin Toning



Acne



Stretchmarks



**Facial Vascular
Lesions**



UNPRECEDENTED, LONG-LASTING RESULTS

NON-INVASIVE. TAILORED TO INDIVIDUAL NEEDS.
MINIMUM SOCIAL DOWNTIME

BEFORE



AFTER 4 TREATMENTS



ACNE TREATMENT WITH IPL
Courtesy of Li Yuanhong, MD

BEFORE



AFTER



ROSACEA TREATMENT WITH IPL
Courtesy of Gilly Munavalli, MD

BEFORE



AFTER



SKIN RESURFACING WITH ResurFX™
Courtesy of Matteo Tretti Clementoni, MD

BEFORE



AFTER

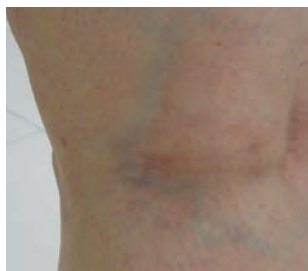


Photofractional™ TREATMENT WITH IPL & ResurFX™
Courtesy of Matteo Tretti Clementoni, MD

BEFORE

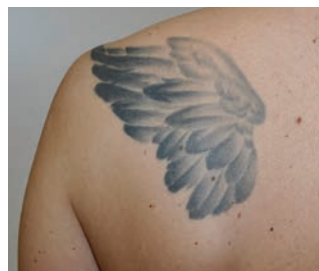


AFTER



LEG VEINS TREATMENT WITH Nd:YAG
Courtesy of Jose Miguel Montero Garcia, MD

BEFORE



AFTER



TATTOO REMOVAL WITH Nd:YAG Q-Switched
Courtesy of Michael Oeser, MD

BEFORE



AFTER



VASCULAR TREATMENT WITH IPL
Courtesy of Matteo Tretti Clementoni, MD

When I think about purchasing a new device,
I think about the ROI, and how quickly I'm going
to be able to pay for the device...
And I was happy to see that **we paid for
the device in just few months, which I
think is unbelievable!**

Melanie D. Palm, MD, MBA



STELLAR M22 IPL

9 EXPERT FILTERS | 3 LIGHTGUIDES
UNLIMITED POSSIBILITIES.



515nm
Rosacea, Light
Pigmentation



560nm
Vascularity, IPL
Skin Treatments



590nm
Vascularity, IPL Skin Treatments,
Pigmentation, Facial Veins



615nm
Pigmentation,
Larger Facial Veins



640nm
Hair Removal,
Lighter Skin



695nm
Hair Removal,
Darker Skin



755nm
Hair Removal,
Darker Skin



Acne Vulgaris
400-600nm &
800-1200nm



Vascular Lesions
530-650nm &
900-1200nm



6 mm
(Round)



8X15 mm



15X35 mm

CLINICAL INDICATIONS:

- Acne
- Poikiloderma of Civatte
- Leg Telangiectasias
- Hair Removal
- Port Wine Stains
- Venous Malformations
- Angiomas
- Benign Epidermal Lesions
- Ephelides (Freckles)
- Hemangiomas
- Warts
- Spider Angiomas
- Dyschromia
- Cutaneous Lesions
- Erythema of Rosacea
- Leg Veins
- Striae (Stretch Marks)
- Benign Cutaneous
- Melasma
- Facial Telangiectasias
- Hyperpigmentation
- Scars
- Truncal Telangiectasias
- Vascular Lesions

OPTIMAL PULSE TECHNOLOGY (OPT®)

• Safe Energy Delivery:

OPT™ equalizes energy across the pulse, reducing the risk of burns and ensuring safer treatment.

• Enhance Treatment Comfort:

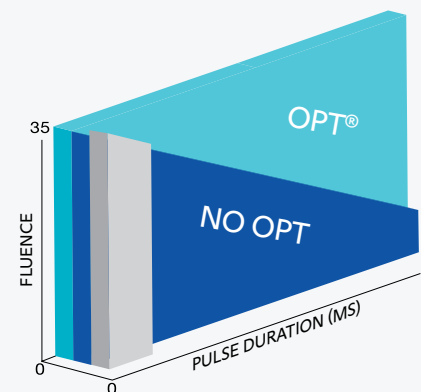
More controlled energy distribution leads to gentler, less painful procedures.

• Achieve Superior Results:

Consistent energy delivery improves efficacy, providing better, more predictable treatment outcomes.

IPL with OPT™

- Stellar M22 IPL with OPT.
- High-powered IPL without OPT.
- Limited capabilities of lower-powered systems.





STELLAR M22 ResurFX™

TRUE FRACTIONAL, NON-ABLATIVE SKIN RESURFACING LASER WITH JUST ONE PASS & MINIMAL DOWNTIME

✦ **CUSTOMIZABLE TREATMENTS**
Over 600 combinations of area, shape, size, and density.

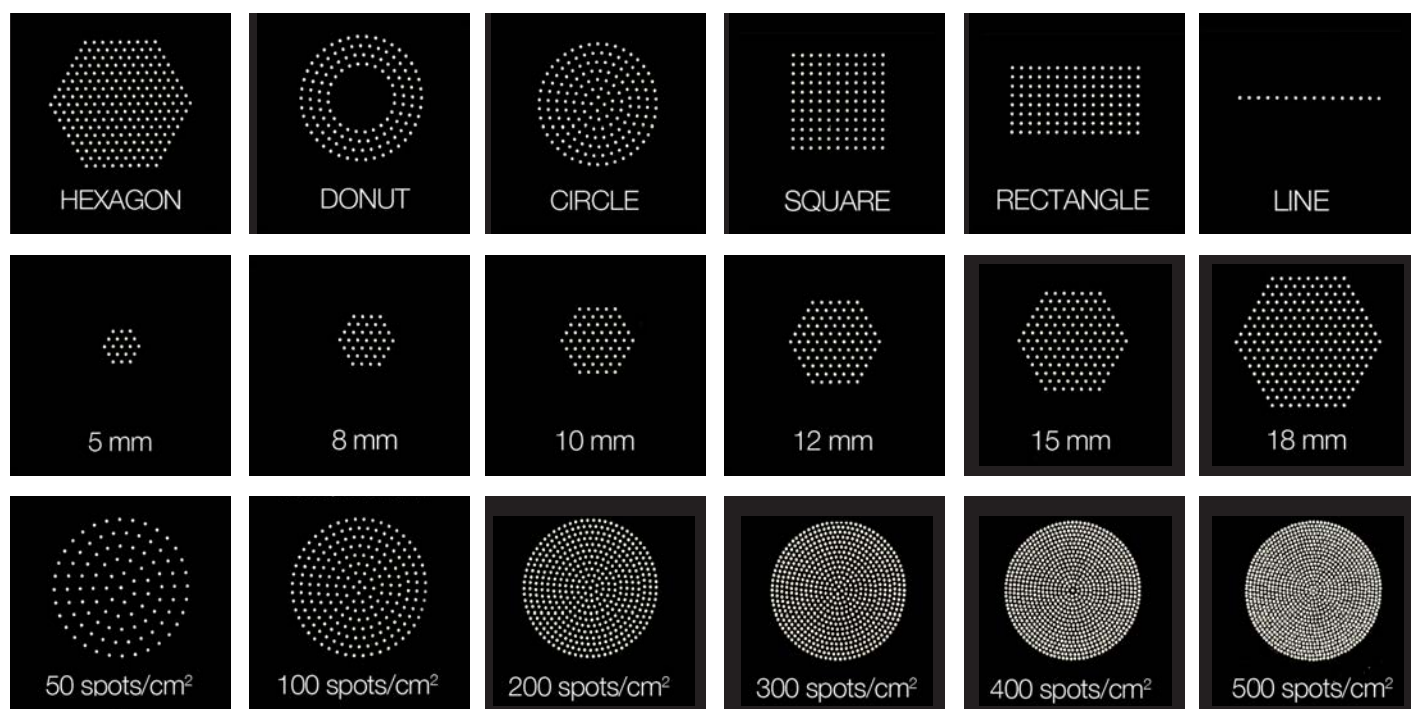
✦ **ADVANCED TECHNOLOGY**
Precise, homogenous, and uniform micro-beams for predictable, reproducible results.

✦ **EFFICIENT AND COST-EFFECTIVE**
No consumables, enhancing practice profitability.

✦ **PRACTITIONER-FOCUSED DESIGN**
Clear visibility of treatment site using SapphireCool™ Tip for safety and precision.

ResurFX™ CoolScan™ SHAPES:

6 Different Shapes, with Sizes and Densities changeable from the user interface, allow treatment precision and control.



STELLAR M22 Multi-Spot™ Nd:YAG

PRECISE VASCULAR TREATMENTS
WITH FLEXIBLE SPOT SIZES FOR
OPTIMAL PATIENT OUTCOMES

Precise and Comfortable Treatment with
3 Cooled and Easily Changed Lightguides.



SPOT SIZE
2mm X 4mm



SPOT SIZE
6mm



SPOT SIZE
9mm



Maximized Treatment Safety with MSP™ Technology and preset parameters
to ensure safe, consistent treatments every time.

MULTIPLE-SEQUENTIAL PULSING (MSP™)

• Deliver More Energy Safer:

MSPTM breaks the energy into multiple pulses, allowing surrounding tissue to cool between pulses. This ensures safer, deeper, higher energy delivery without risking skin damage.

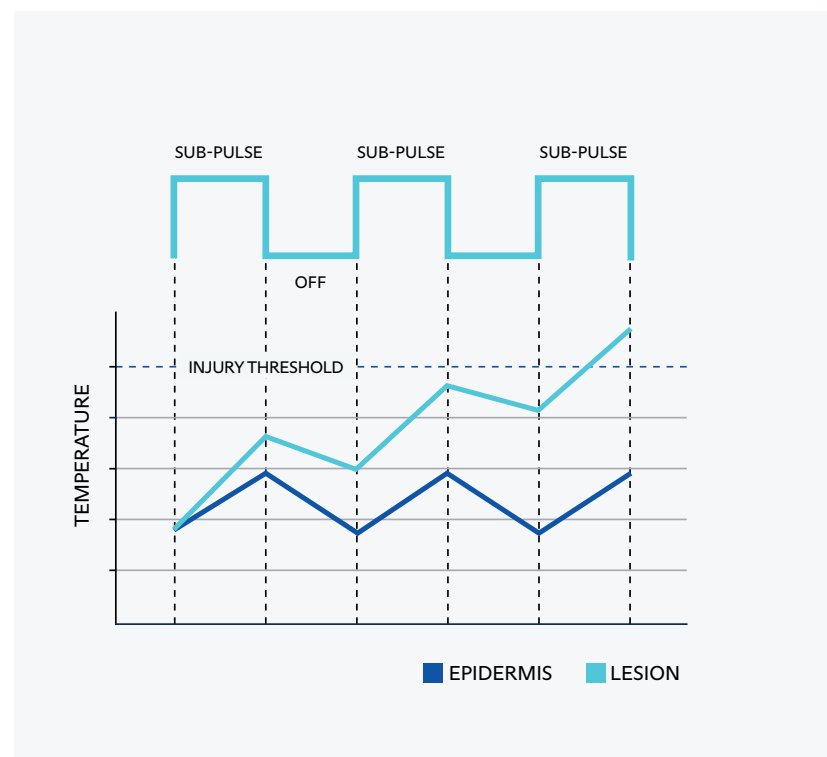
• Enhance Treatment Comfort:

By cooling the tissue between light pulses, MSPTM technology minimizes discomfort during treatments, creating a more pleasant experience for your clients.

• Provide Consistently Superior Results:

Precise energy control ensures uniform treatment, leading to more consistent and longer-lasting results.

✦ Improves the efficacy in clearance of vascular lesions*



* Pavan K. Nootheti, MD; Kimberly A. Pettit, MD; Gail Yosowitz, BS; Mitchel P. Goldman, MD. Clinical Improvement of Photodamaged Skin After a Single Intense Pulsed Light Treatment. The American Journal of Cosmetic Surgery Vol. 24, No. 1, 2007.

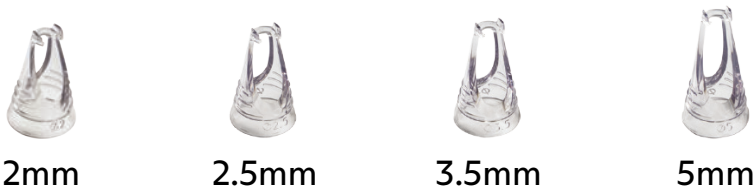


STELLAR M22™ Q-Switched Nd:YAG

HIGH POWERED NON-THERMAL ACOUSTIC
LASER FOR PIGMENTS REMOVAL USING
SHOCKWAVES RATHER THAN HEAT.

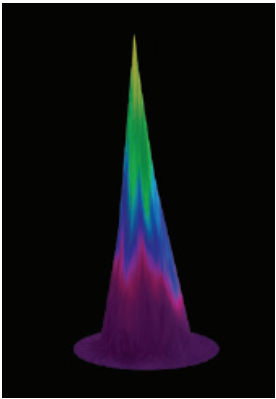
SAFE ON ALL SKIN TYPES

7 Spot Sizes for Customized Treatments,
4 of which Are Also Available as Disposable Tips

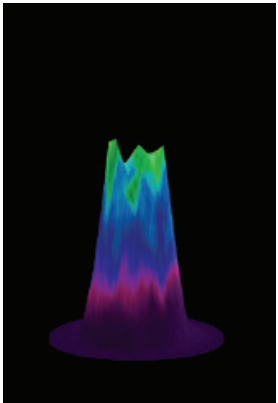


“TOP-HAT” BEAM PROFILE ADVANTAGES

- ✦ Enhanced treatment safety due to avoidance of bulk heating using the homogenizer.
- ✦ Top-hat beam profile minimizes epidermal damage, tissue textural changes and the occurrence of scarring.
- ✦ A lack of a homogenizer might result in hot spots within the beam and increased risk of scarring.



Beam profile side view
without a homogenizer



Beam profile side view
with an homogenizer for
a top-hat beam

YOUR JOURNEY WITH LUMENIS HAS JUST BEGUN

We want your business to grow with Lumenis. That's why we have put together a support package that begins with the first conversation and will stay with you as your business begins to see the benefits. We provide a support package which ensures that you have all the training you need and receive the most up to date clinical materials. Our direct to consumer marketing activities support the brand, keeping Stellar M22 the treatment of choice when it comes to laser and light skin treatment.



LUMENIS PRACTICE LOCATOR

Thousands of patients search for treatment providers every month. Help them find your clinic by registering your practice on the Lumenis Practice Locator. We run campaigns through influencers, social media and viral videos to promote this directory.



LUMENIS ONLINE

Consumers have many questions about laser hair removal treatments. Our dedicated patient-facing website will give them the re-assurance and confidence they need to move forward with the treatments.



TEAM TRAINING

We install the system and train your staff, so that you are able to assess skin types and conditions, creating the perfect treatment plan for each individual patient. Thanks to the clinical training you will be able to tailor treatments with confidence.



EXTENSIVE SERVICE NETWORK

We are committed to providing high quality, comprehensive service for medical equipment repair and maintenance. Lumenis service provides you with peace of mind, so you can focus on patient care, rather than on the equipment.



BRAND YOUR CLINIC

As a Lumenis client you will have access to the Lumenis Physician Portal. Here, you can find materials such as brochures and posters. As well as gain access to a wealth of clinical and product information.



YOUR MOST VALUABLE RESOURCE

Your dedicated representative is an email, text, or phone call away. We want you to feel part of the Lumenis family, so please feel free to contact us any time. We'll always do our best to get back to you asap.

SPECIFICATIONS

Stellar IPL™

SPECTRUM	400-1200 nm
ExpertFilters	Acne (400-600 & 800-1200); Vascular (530-650 & 900-1200); 515 nm, 560 nm; 590 nm; 615 nm; 640 nm; 695 nm; 755 nm;
FLUENCE	up to 56 J/cm ²
PULSE DURATION	4-20 ms
PULSE DELAY	5-150 ms
PULSE CHARACTERISTIC	Multiple Sequential Pulsing
REPETITION RATE	Up to 1 Hz
SPOT SIZE	35×15 mm ² ; 15×8 mm ² , 6mm
COOLING	Continuous contact cooling

MultiSpot™ Nd:YAG

WAVELENGTH	1064 nm
FLUENCE	10-225 J/cm ²
PULSE DURATION	2-20 ms
PULSE DELAY	5-100 ms
PULSE CHARACTERISTIC	Multiple Sequential Pulsing
REPETITION RATE	Up to 1 Hz
SPOT SIZE	6 mm; 2×4 mm ² ; 9 mm
COOLING	Continuous contact cooling

ResurFX™

WAVELENGTH	1565 nm
PULSE ENERGY	10-70 mJ per micro-beam
PULSE CHARACTERISTIC	CoolScan™ Scanner
PATTERN SHAPES	Horizontal line, vertical line, square, horizontal rectangle, vertical rectangle, circle, donut, hexagon
BEAM DENSITY	50-500 micro-beams/cm ²
REPETITION RATE	0.5-2 Hz
TIP	SapphireCool; Precision
SPOT SIZE	Up to 18 mm
COOLING	Continuous contact cooling

Q-Switched Nd:YAG

WAVELENGTH	1064 nm
FLUENCE	0.9-14 J/cm ²
PULSE DURATION	6-8 ns
PULSE CHARACTERISTIC	Top-Hat
REPETITION RATE	0.5-5.0 Hz
SPOT SIZE	2; 2.5; 3.5; 4; 5; 6 and 8 mm

SYSTEM SPECIFICATIONS

DIMENSIONS [without ResurFX]	51X56X52 cm (21X22X20.5 inches)
DIMENSIONS [with ResurFX]	51X56X65 cm(21X22X25.6 inches)
WEIGHT [without ResurFX]	45 kg / 99.2 lbs
WEIGHT [with ResurFX]	60 kg / 132.3 lbs
ELECTRICAL REQUIREMENTS	100 - 240 VAC ±10%, 12A max, 50/60 Hz, single phase, dedicated line

WARNINGS AND RISKS

As with any laser or IPL, appropriate care must be taken to ensure safe and proper use. The Stellar M22 operator's manual should be thoroughly reviewed and understood before operating this instrument. Stellar M22, including the Stellar IPL, Multi-Spot Nd:YAG, Q-Switched Nd:YAG and ResurFX, is contraindicated for patients with active infection, viral, fungal or bacterial diseases. It is also contraindicated for patients with skin disorders or inflammatory skin conditions. Be advised that IPL/Laser can cause epidermal injury. The risk increases with greater fluence/energy and skin pigmentation. The use of Stellar M22 could cause redness, swelling, change of pigmentation and scarring. See the system user manual for a complete list of contraindications and risk.

© 2025 Lumenis Be Ltd., All Rights Reserved. The Lumenis Group of Companies, Lumenis, its logo, Stellar M22, Stellar IPL, OPT, Multiple-Sequential Pulsing, ExpertFilters, SapphireCool lightguides, Photofractional, ResurFX and CoolScan are trademarks or registered trademarks of the Lumenis Group of Companies. Specifications are subject to change without notice Lumenis is ISO 13485:2016 certified.

LUMENIS BE LTD.

Yokneam Industrial Park
Hakidma Street,9. ISRAEL
P.O.B 426
Yokneam 2069236

AMERICAS

San Jose, CA, USA
T +1 408 764 3000
+1 877 586 3647
F +1 408 764 3999

EMEA

Dreieich, Germany
T +49 6103 8335 0
F +49 6103 8335 300

ASIA / PACIFIC

Beijing, China
T + 86 1057 3766 77
F + 86 1057 3767 67

Seoul, Korea
T +82 2 6137 9225
F +82 2 6137 9231

Formello (RM), Italy
T +39 06 90 75 230
F +39 06 90 75 269

Gurgaon, India
T +91 124 4220 795
F +91 124 4854 932

Tokyo, Japan
T +81 3 44318300
F +81 3 44318301

Buckinghamshire, UK
T +44 20 8736 4110
F +44 20 8736 4119

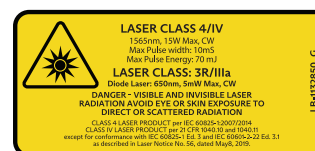
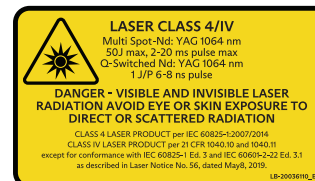
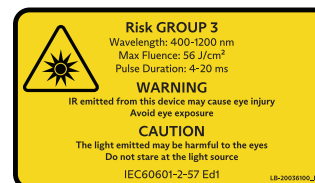
Kowloon, Hong Kong
T + 852 2174 2800
F + 852 2722 5151

Melbourne, Australia
T +61 1800 5863 64
F + 61 3 9863 7822

Nice, France
T +33 4 8939 8341

Taipei, Taiwan
T +886 2 7719 9098
F: +886 2 7719 9005

© LUMENIS BE LTD. 2025



CE 0483 Rx ONLY

PB-00085660 Rev A

LUMENIS

